



## DTC400 DIRECT-TO-CARD PRINTER/ENCODER

THE EASY, FLEXIBLE WAY TO PRINT AND ENCODE PLASTIC ID CARDS.



*The Fargo DTC400 Card Printer/Encoder is designed for easy operation and hassle-free maintenance. The SmartLoad Ribbon Cartridge combines a printer ribbon and card cleaning roller into one disposable or refillable unit. Just slide in the cartridge, close the door, and you're done. No feeding or tearing ribbon rolls, no fumbling with separate cleaning rollers.*

### Get unbelievable versatility for all your card-printing needs.

The DTC400 is designed to give your organization exactly what it needs: a professional, modular card printing system that's versatile and easy to use. It allows your organization to produce colorful, durable photo ID cards with the options of sophisticated card technology for increased functionality. All of that, from a printer that's simple to operate, virtually maintenance-free and adaptable – it can be field-upgraded as your needs expand.

It's an excellent choice for small- to mid-sized businesses, K-12 schools, public safety departments, state government agencies, local government facilities such as libraries and parks, recreation passes, membership and loyalty clubs, events and more. Because of the DTC400's size, it's completely portable, making it a great fit for organizations with multiple locations or on-site card printing needs.

### Never hassle with ribbons or card cleaning again.

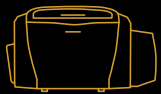
Anyone who's ever operated an ID card printer knows the frustration: hard-to-load ribbons, separate card cleaning mechanisms and confusing indicator lights. The DTC400 eliminates these hassles with

simplified materials handling and a user-friendly interface. Our SmartLoad™ Ribbon Cartridge combines the printer ribbon and SmartClean™ card cleaning roller into one cartridge. Just slide it into the DTC400 and you're done. The LCD control panel replaces blinking indicator lights, giving you easy-to-follow prompts and commands so you'll always know the status of your DTC400.

### Easily adapts to changing ID card needs.

From the kinds of ribbons you can use to the kinds of cards you can print, the DTC400 offers flexibility. Personalize blank cards with full-color, edge-to-edge images. Or use economical half-panel ribbons to personalize pre-printed cards with a photo and bar code. You can even add encoding and dual-sided printing modules as your security and other needs evolve. Simply order the DTC400 model that's right for you today, then rest easy knowing you can easily add a prox card reader, smart card encoder or dual-sided printing module tomorrow.

**FARGO**<sup>®</sup>  
Part of HID Global **HID**



- 1** Make ID cards more informative by printing larger photos on the front and more text on the back with the optional dual-sided printing module.
- 2** Add functionality to your ID cards — such as building and parking access, PC login, vending and more — with options for mag stripe, prox and smart cards.
- 3** Simplify operator training and eliminate the expense and downtime of torn ribbons with the SmartLoad Ribbon Cartridge. Refillable cartridges and half-panel ribbons offer economical options.
- 4** Reduce maintenance and maintain print quality with the integrated self-cleaning SmartClean Roller.
- 5** Reduce downtime, operator errors and training costs by constantly knowing printer status through the SmartScreen™ LCD Control Panel.

The Fargo DTC400 Card Printer/Encoder is the ideal choice for mid-sized corporate, K-12 education and local/state government applications. To learn more, contact an authorized Fargo integrator today.



**Specifications Overview** (complete DTC400 specs available at [www.fargo.com/dtc400-specs](http://www.fargo.com/dtc400-specs))

<b>Print Method:</b>	Dye-Sublimation / Resin Thermal Transfer
<b>Resolution:</b>	300 dpi (11.8 dots/mm)
<b>Colors:</b>	Up to 16.7 million / 256 shades
<b>Print Speed:**</b>	Batch Mode: <ul style="list-style-type: none"> <li>• 7 seconds per card (K)*</li> <li>• 12 seconds per card (KO)*</li> <li>• 27 seconds per card (YMCKO)*</li> <li>• 35 seconds per card (YMCKOK)*</li> </ul>
<b>Accepted Standard Card Sizes:</b>	CR-80 (3.375"L x 2.125"W / 85.6mmL x 54mmW) CR-79 Adhesive Back (3.313"L x 2.063"W / 84.1mmL x 52.4mmW)
<b>Accepted Card Thickness:</b>	20 mil to 30 mil (.020" to .030" / .51mm to .76mm)
<b>Input Hopper Card Capacity:</b>	100 cards (.030" / .762mm)
<b>Output Hopper Card Capacity:</b>	Up to 30 cards (.030" / .762mm)
<b>Software Drivers:</b>	Windows® 98SE/Me/2000/XP/Server 2003/Vista
<b>Print Area:</b>	CR-80 edge-to-edge (3.36"L x 2.11"W / 85.3mmL x 53.7mmW) CR-79 (3.3"L x 2.04"W / 83.8mmL x 51.8mmW)
<b>Options:</b>	<ul style="list-style-type: none"> <li>• Dual-sided Printing Module – Field-upgradeable</li> <li>• Magnetic Stripe Encoding Module – Field-upgradeable</li> <li>• E-card Encoding Modules – Field-upgradeable</li> <li>• Printer cleaning kit</li> <li>• Ethernet networking with internal print server (replaces USB connection)</li> <li>• 100-card output hopper with or without reject tray</li> </ul>
<b>Warranty:</b>	<ul style="list-style-type: none"> <li>• Printer – Two years including free loaner printer in the first year (U.S. only); Optional Extended Warranty Program (U.S. only)</li> <li>• Printhead – Two years, unlimited pass with UltraCard™ Cards</li> </ul>



The Fargo DTC400 Card Printer/Encoder has been tested to ensure that it meets Microsoft® standards for Windows® compatibility. Microsoft, Windows, and the Windows logo are trademarks, or registered trademarks of Microsoft Corporation in the United States and/or other countries.

**Your Total Solution**

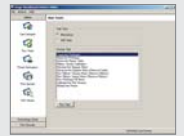
Every Fargo printer/encoder is the central component of a complete Fargo Card Identity System. We also offer software, materials, cameras and accessories — everything you need from one trusted source, for a total solution to your card printing needs.

**Software**

Fargo printer/encoders work with Fargo Asure ID® applications and all other leading card creation and issuance management software.



Fargo printer/encoders also come with Fargo Workbench™, a software toolkit for set up, printer security, diagnostics and firmware upgrades.



**Materials**

Fargo ribbons, films, overlaminates, and other materials not only ensure superior print quality for long-lasting, great-looking cards, they add features that increase durability and resist counterfeiting. That means fewer card replacements and lower cost per card.



**Cameras and Accessories**

Fargo offers a selection of digital cameras, photo lighting equipment and backgrounds, plus card accessories such as lanyards and clips.



\*Indicates the ribbon type and the number of ribbon panels printed where Y=Yellow, M=Magenta, C=Cyan, K=Resin Black  
 \*\*Print speed indicates an approximate print speed and is measured from the time a card drops into the output hopper to the time the next card drops into the output hopper. Print speeds do not include encoding time or the time needed for the PC to process the image. Process time is dependent on the size of the file, the CPU, amount of RAM and the amount of available resources at the time of the print.



This data sheet is for informational purposes only. Fargo Electronics makes no warranties, expressed or implied, in this summary. Company and product names and data used in sample output are fictitious. Specifications are subject to change without notice. Asure ID Solo, Asure ID Express, Asure ID Enterprise and Asure ID Exchange are trademarks and Asure ID is a registered trademark of HID Global Corporation. Workbench, SmartLoad, SmartScreen, SmartClean and UltraCard are trademarks and Fargo is a registered trademark of Fargo Electronics, Inc. All other trademarks and registered trademarks are property of their respective companies. This is not an offer of sale.

© 2007, Fargo Electronics, Inc. All rights reserved.

[www.fargo.com](http://www.fargo.com)

**Headquarters**  
 Phone: +1 (952) 941-9470  
 Phone: (800) 459-5636  
 E-mail: [sales@fargo.com](mailto:sales@fargo.com)

**Washington D.C.**  
 Phone: (800) 459-5636  
 E-mail: [govsales@fargo.com](mailto:govsales@fargo.com)

**Asia Pacific**  
 Phone: +852 3160-9800  
 E-mail: [asia.sales@fargo.com](mailto:asia.sales@fargo.com)

**Europe**  
 Phone: +44 (0) 1440 714 850  
 E-mail: [europa.sales@fargo.com](mailto:europa.sales@fargo.com)